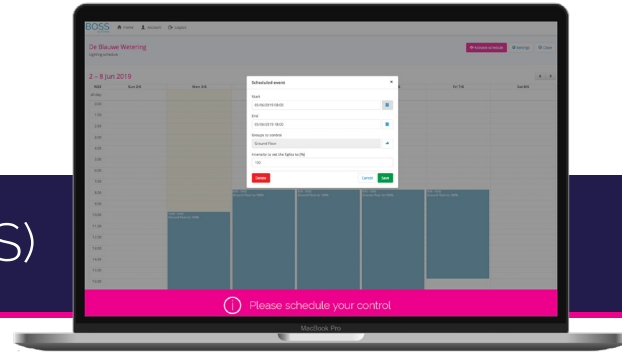


Mymesh Product Sheet

Wirelessly connect any light, anywhere.

Mymesh Management System (MMS)



Control, manage and analyze every device in your building

Connected LED transforms your lighting into an adaptive infrastructure that constantly evolves in line with the technological advancement and the users changing demand.

It makes your lighting system efficient, sustainable and adaptive as it automatically creates a constant equilibrium between comfort and efficiency.

MMS

The Mymesh Management System (MMS) enables the user to easily monitor, analyze and control your Mymesh network(s). MMS is available on a subscription basis. We offer 5 different subscription models to facilitate every user.

The subscriptions are:

- Basic
- Control upgrade
- Pro
- Advanced
- OEM

What you need:

- Network
- Gateway
- MMS subscription

Smart control options:



Light control



Calendar



Testing



Future updates

Functionalities:

Registration

- Sign in to MMS
- Register new network location
- Register new network owner/admin
- Register new network installer/user
- Manage network and user

Commissioning

- Login iPad Commissioning App
- Unlimited commissioning
- Mymesh Commissioning training
- Save building data to MMS

Monitor

- Energy consumption
- Status report devices
 - Lamp status
 - Battery status
 - Burning hours
 - Temperature

Support

- Helpdesk
- Remote technical support

Detailed sensor data

- Light level
- Control state
- Presence level
- Switch activity level
- Philips S. R. Data

- Check ✓
- Monitor ✓
- Analyze ✓
- Control ✓
- Update ✓



An answer to every need

Basic

Autonomous network

Users who only need a reliable wireless lighting network without all the data features can choose for Basic. This package enables the user to set up his network and request temporary commissioning access to make changes to the light control settings.

Pro

Check & Monitor

Mymesh Pro was tailored to the needs of the user who wants to be in control of any situation. The platform shows the status of the network and its devices while it gives a detailed overview of all necessary data to monitor the lighting system.

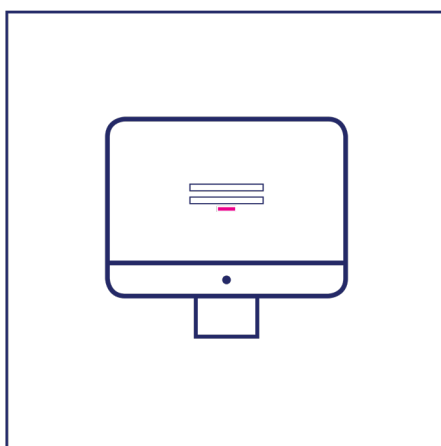
Advanced

Analyze & Control

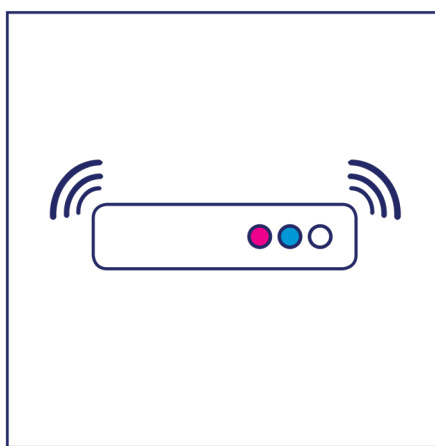
Analyze and controlEngineered for the professional who needs to have total control at all times. All network data, including sophisticated sensor data is clearly visualized to make fast and detailed analyses. Advanced brings all precious information directly to the MMS.

Basic can be upgraded with control features. Ask your account manager for more details.

Connected in just 3 steps



1. Register with your credentials



2. Add Mymesh gateway



3. Configure the network via the App.

This product sheet is subject to change.
V0.4.12