

# Mymesh Building Light Control

## LCM-40-MM



## Product sheet

### Wirelessly control any make or type of luminaire

The LCM-40MM LED driver is a wirelessly controllable and dimmable LED driver. It replaces traditional dimmable drivers and is the simplest solution for instant, wireless control of your lighting fixtures. The LCM-40MM LED driver is easy to install with no additional control cables required.

With the Mymesh Building Light Control module integrated in the driver it is instantly connected to the Mymesh network and wirelessly controllable. The LCM-40MM LED driver enables switching, dimming, scenes and can be connected to a third party management system. Our driver is ideal for those who seek high energy savings with minimal installation time and costs.

### Mymesh Building Light Control

Mymesh Building Light Control is a wireless light control system that can be applied with any make and type lighting fixture as shown in the image below. Our Mymesh Building Light Control system makes use of smart control devices like a driver or controller for lighting fixtures and smart LED tubes (Nr. 1-4). A wireless switch (Nr. 5) and sensor (Nr. 6) is applied for automatic and manual control options. All components automatically form a strong, mesh network.

#### Easy installation

The LED driver is easy to install due to accessible design. The smart drivers can be connected to all luminaires with a maximum of 40W. The LCM-40MM is a multiple-stage constant current driver, where the selection of output current is chosen through DIP switches.

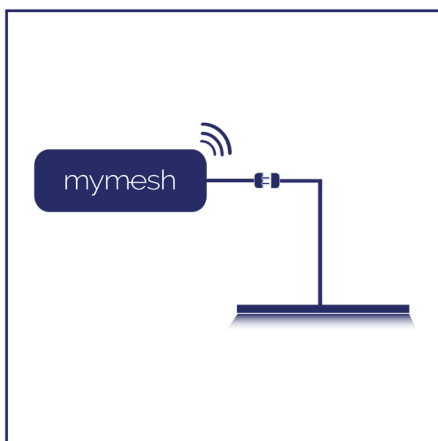
#### Network features

- Wireless, stand-alone network that is self-organizing and self-healing
- 2.4GHz communication for reliable data transfer
- Secure by design
- Ultra-scalable to >10.000 fixtures in one network
- Low operational cost

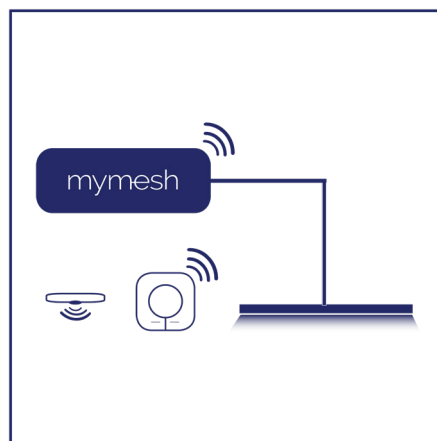
#### Features

- Set the current by using a dip switch to choose from multiple levels
- Set max light level on power-up
- Up to 80% energy savings with light control
- Dimming and switching
- On-the-fly (re)commissioning with the Mymesh app for iPad
- Connect to third-party back-office/ light management system

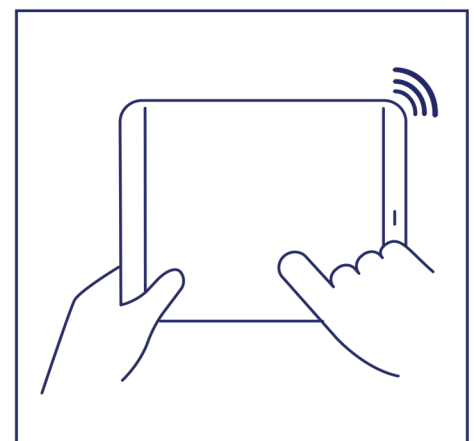
## Smart lighting in 3 steps



1. Connect Mymesh to your lights



2. Add sensors and switches



3. Configure the network via the App.

## Technical specifications

Technical specifications are derived from the MEAN WELL LCM-40 Series specification. For more technical details we refer to MEAN WELL's specification document which can be found on our website: [www.chess-wise.eu/en/downloads](http://www.chess-wise.eu/en/downloads).

### General parameters

Dimensions (L x W x H)	123.5 x 81.5 x 23mm
Weight	approx. 240gr
Protection degree	IP20
Connections	Push type connections
Ambient temperature	-25°C ~ +40°C at 40V, 1.05A -25°C ~ +50°C at 45-100V, 0.9-0.35A
Tc	+90°C
Humidity	20 .. 90%
Height	<2.000m
Certification	CE Marking

### Electrical Specification

Input voltage	180-295 VAC
Power	max 40W
Power factor	>0.975 nominal load
Efficiency	91% (500mA/80v)
Standby power	<0.5W
Max inrush current	Cold Start 20A (twidth=260µs measured at 50% Ipeak) at 230VAC
Constant current	350mA - 1050mA (adjustable with dip switch)
Output voltage	2-100V

### Wireless control parameters

Radio	2.4Ghz ISM band
Dimmable	6% - 100%
initial light level	0 - 100%
Fade time	100ms - seconds
Groups	8

### Protection

Over voltage protection	Yes, see LCM-40 spec.
Max temperature protection	Yes
Short-circuit protection	Yes

### Order information

BLC MEAN WELL LED Driver LCM-40MM  
BLC.1004.001



This product sheet is subject to change.  
Vo.4 13

### Contact information

<http://chess.nl>  
[info@chess.nl](mailto:info@chess.nl)  
Tel: +31 (0)23 51 49 149

### Visiting address

Chess Wise BV  
Richard Holkade 8A  
2033 PZ HAARLEM  
The Netherlands

### Shipping address

Chess Wise BV  
Oorkondelaan 65  
2033 MN Haarlem  
The Netherlands

### Trade information

Chamber of commerce: KvK 59280719  
IBAN: NL36RABO 0140 0676 98  
Swift: RABONL2U  
VAT: NL853402723B01