

Building Light Control Bluetooth Gateway



Product sheet

The Bluetooth Gateway enables communication between the Mymesh network and the compatible commissioning App for iPad

Technical summary

The Bluetooth Gateway uses the Mymesh network protocol to communicate with the Mymesh network and uses the Bluetooth Low Energy protocol to communicate with the iPad.

Order information

BLC.2000.002
Bluetooth Gateway

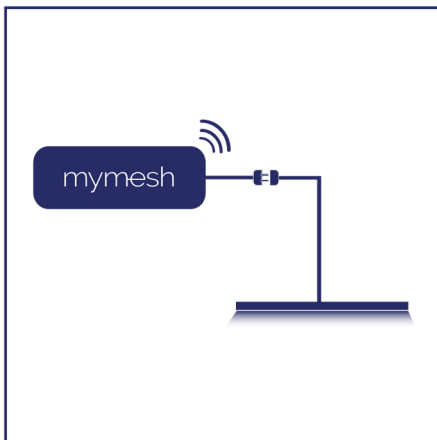
Network features

- Wireless, stand-alone network that is self-organizing and self-healing
- 2.4GHz communication for reliable data transfer
- Secure by design
- Ultra-scalable to > 10.000 fixtures in one network
- Low operational cost

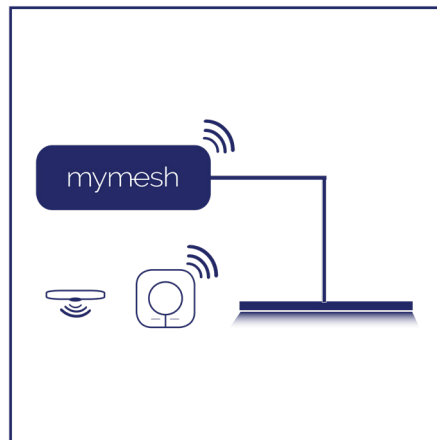
Features

- Comes with a rechargeable battery including micro-USB power cable
- Commissioning App for iPad available for commissioning of Mymesh devices

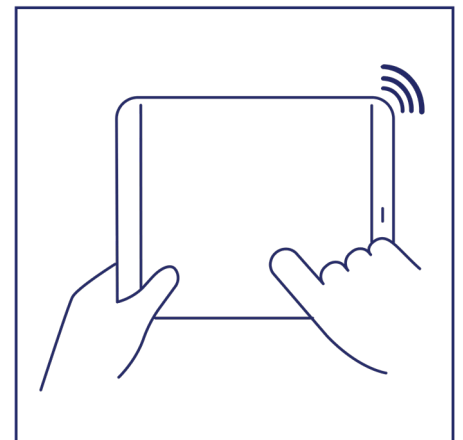
Smart lighting in 3 steps



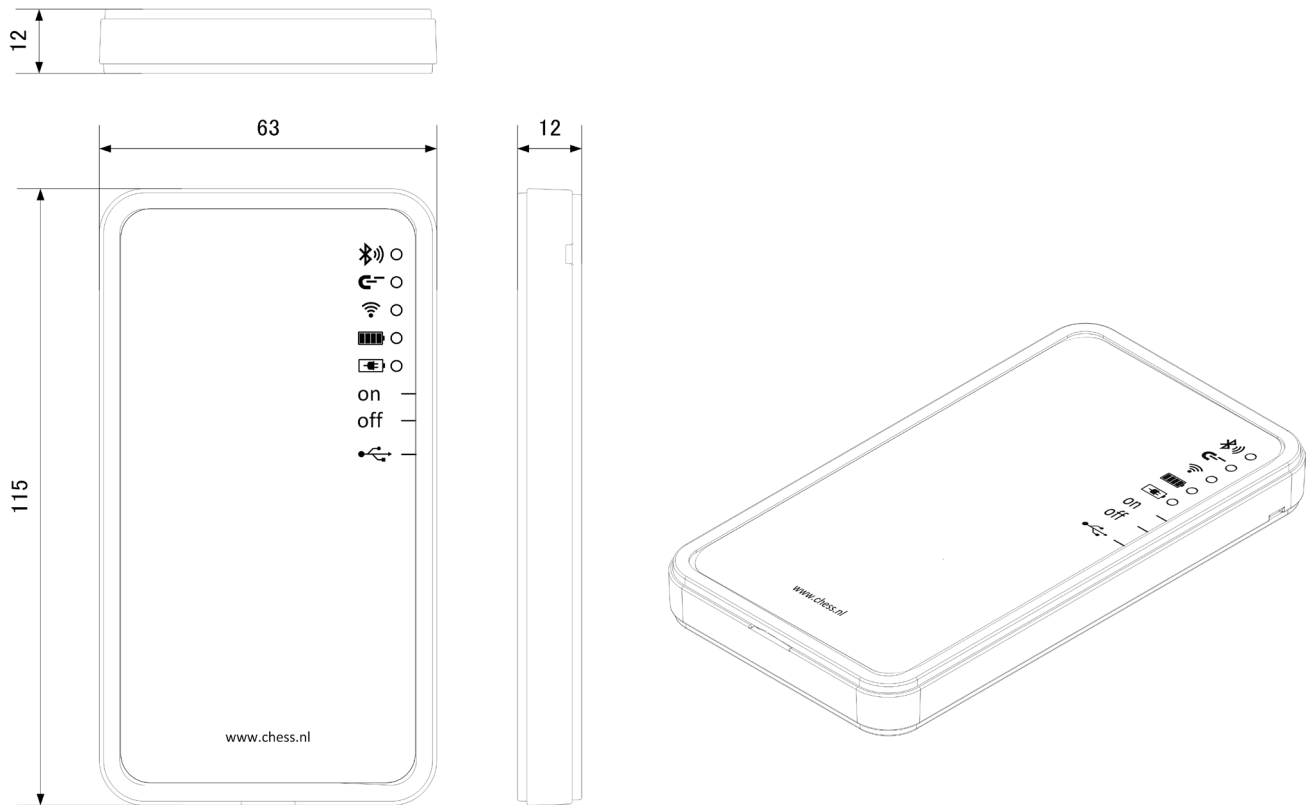
1. Connect Mymesh to your lights



2. Add sensors and switches



3. Configure the network via the App.



Technical specifications

Connections

Power supply: Micro-USB - 5V DC 500mA

Power adapter

Power supply: single phase 230VAC (+/-10% 50Hz)

Certification

CE marking

Radio

2.4GHz ISM band (2.400 – 2.4835 GHz)

Housing

LxWxH: 115 x 63 x12 mm

Material: ABS (UL94HB)

Color: White

This product sheet is subject to change.
Vo.413

Contact information

<http://chess.nl>

info@chess.nl

Tel: +31 (0)23 51 49 149

Visiting address

Chess Wise BV
Richard Holkade 8A
2033 PZ HAARLEM
The Netherlands

Shipping address

Chess Wise BV
Oorkondelaan 65
2033 MN Haarlem
The Netherlands

Trade information

Chamber of commerce: KvK 59280719
IBAN: NL36RABO 0140 0676 98
Swift: RABONL2U
VAT: NL853402723B01